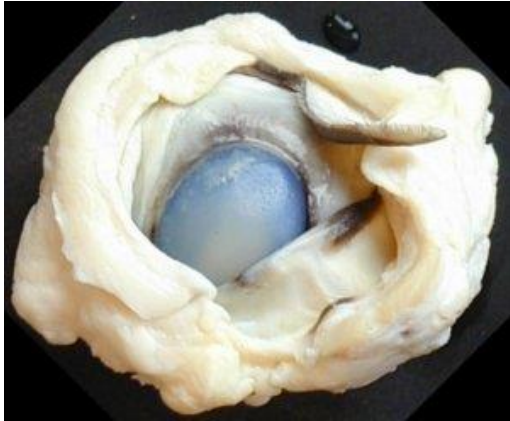


Protocole Niveau 2

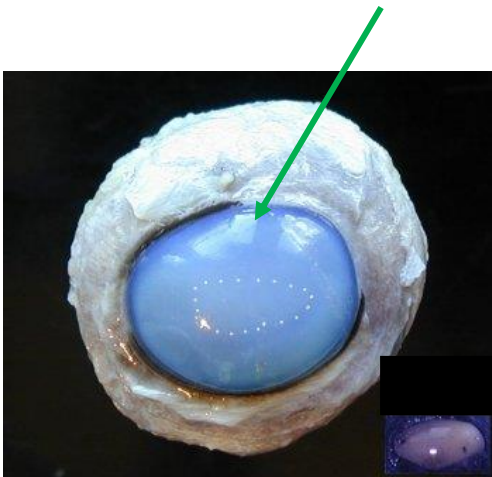
Protocole de dissection de l'œil de veau

1. Isoler le globe oculaire :

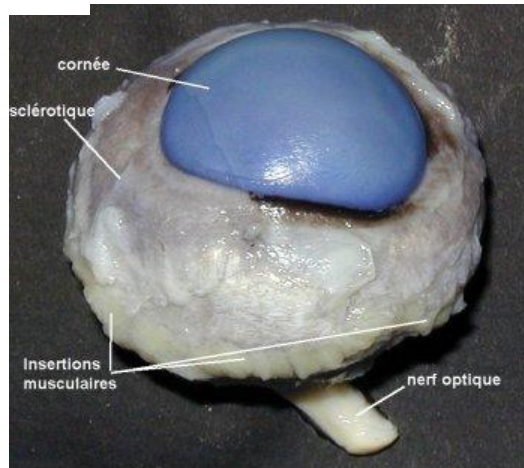


2. Repérer les structures externes :

Délimitation de la pupille



Vue de face

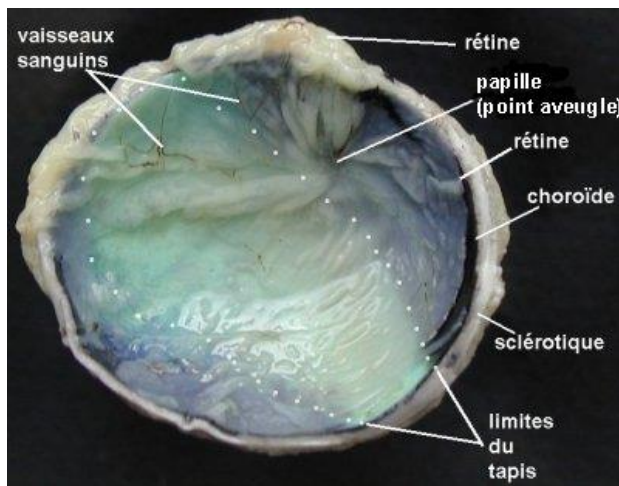
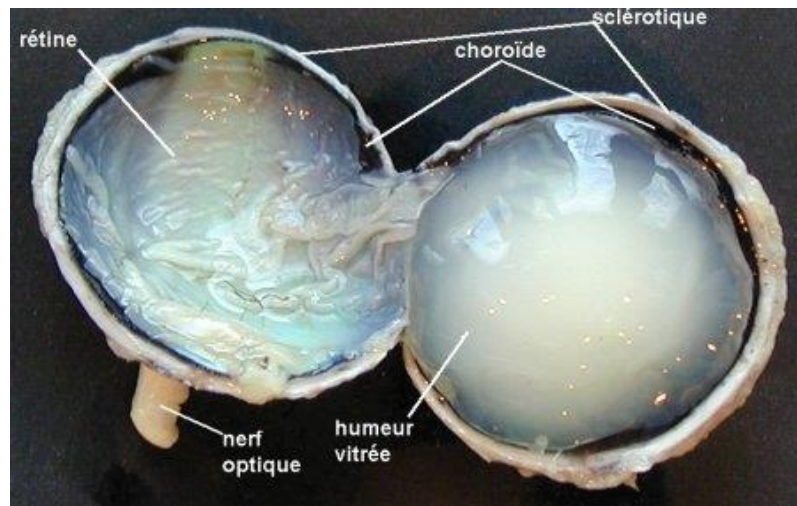


Œil droit

3. Repérer les structures internes :



Ne pas trop enfoncer pour ne pas percer l'humeur en dessous



Chambre postérieure



Chambre antérieure